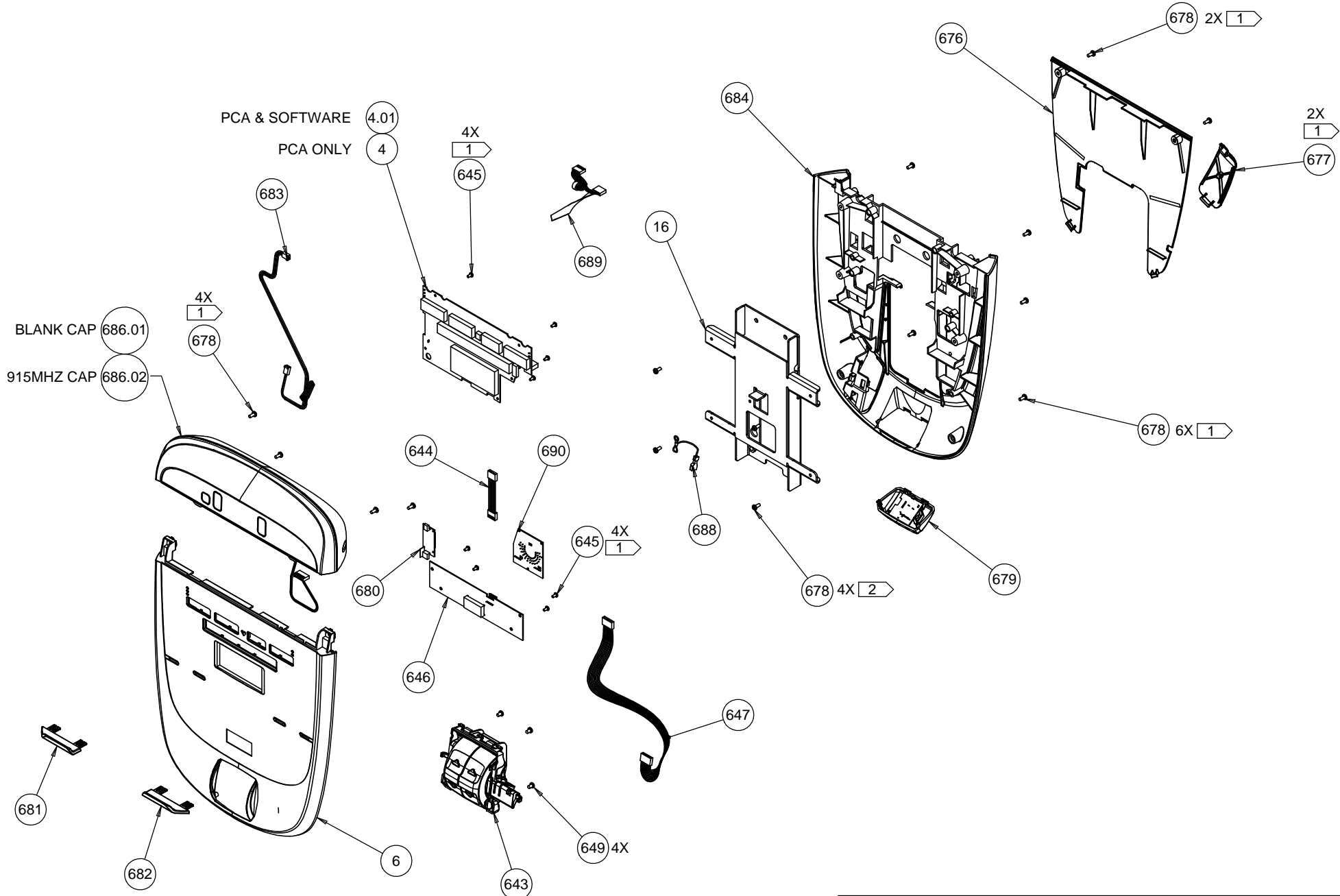


D

C

B

A



PRODUCT:				P30 CONSOLE		PRECOR®	
DRWN BY	11.19.13	WDC	SIZE	PAGE	DWG. NO.	SUBREV	
CS	10.21.13	BG	A	1 OF 1	302310-101	C	

DRAWING TEMPLATE REV: B

P30_AMT12_OS (AC42, ATWK)

Bubble Number	Parts Number	Description
4	300986-408	PCA, DISPLAY, P30-10KEY, (V1.01 BOO
4.01	40199-103	ASSY, UPPER PCA & SW, AMT 835,AMT12
4.01	40199-104	ASSY, UPPER PCA & SW, AMT 835,AMT12
6	302780-150	ASSY,DISPLAY - FACE,P30,AMT12-835,E
643	300350-109	ASSY,MACHINE CONTROL,(DOUBLE)
644	35754-009	ASSY,CABLE,6C, .1 CTR,1-1,TIN,9 in.
645	MGCN013-025	SCREW,MCH,6-32X1/4,PANHD,PHIL,
646	301097-101	ASSY,PCA & SW,DISPLAY,P30,METRICS,D
647	40011-015	ASSY,CBL,8C,.1 CTR,1-1,SN,15 in.
648	300285-102	WELDMENT,DISPLAY,PT - P10/P30/P20
649	PARCN013-038	SCREW, PANHD, PLASTITE, TRILOBE, #6
676	300278-101	PLASTIC, SERVICE COVER, DISPLAY, P2
677	300283-101	PLASTIC, HR DOOR, P40/P20
678	MGCN016-038	SCREW,MCH,8-32X3/8,PANHD,PHIL,
679	300204-105	ASSY, HEAD PHONE JACK, P20/P30 - 91
680	300812-101	BOARD, CHR & WIRELESS, SALUTRON,100
681	303176-101	SUPPORT,BOOK,LEFT,P30/P10
682	303176-102	SUPPORT,BOOK,RIGHT,P30/P10
683	40015-020	ASSY,CBL,3C,.1 CTR,W/RAMP,1-1,SN,20
684	300277-103	PLASTIC, REAR, DISPLAY ,P40/P30/P20
686.02	300210-106	PRODUCT,AMBIENT CAP,US 915MHZ,P10/P
688	301415-008	CBL,1C,20AWG,#8 RING/250X032 QD REC
689	49800-005	ASSY,CABLE, 6C,.1 CTR,1-1,TIN, W/FE
690	300330-101	ASSY, PCA & SW, LED STRIDE DIAL, DI
706	301451-026	ASSY,CBL,3P3C-6P3C(W/RAMP & RIBS),.